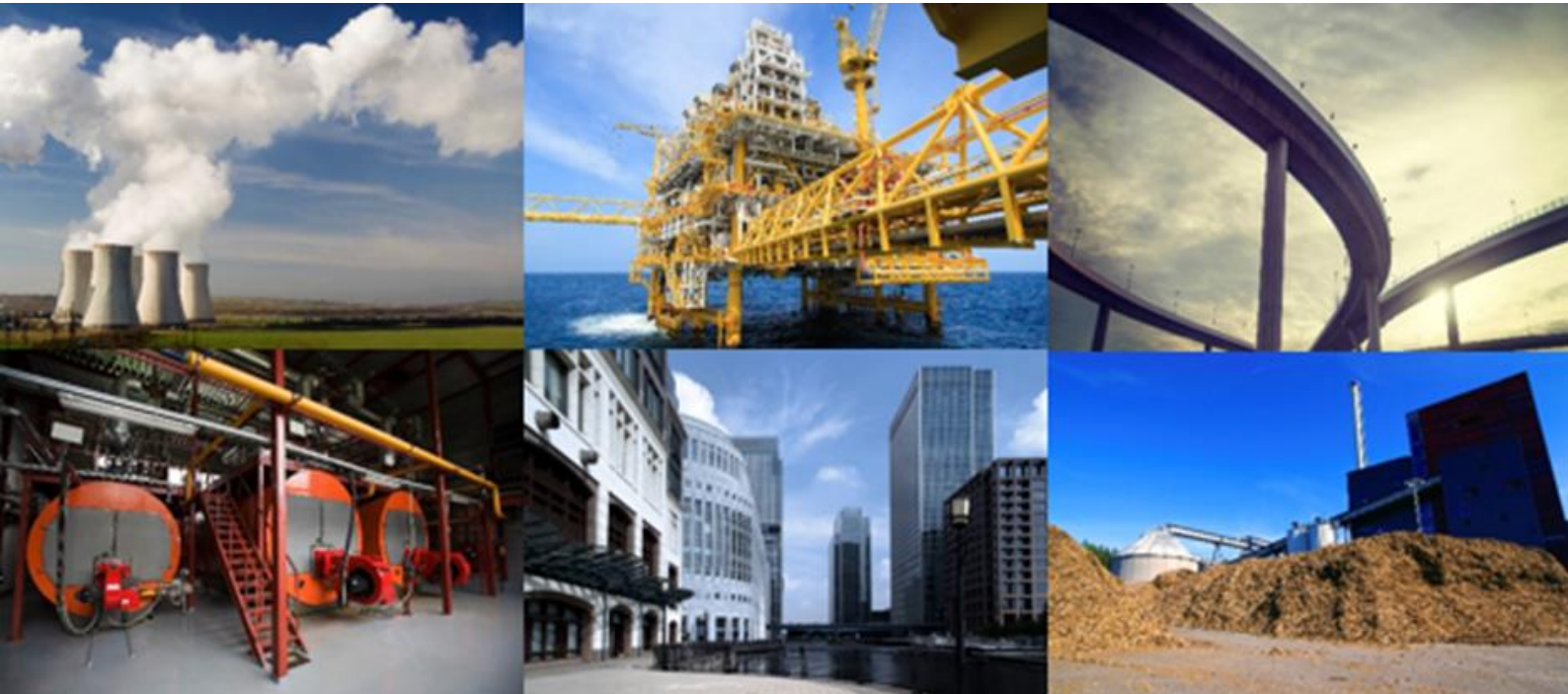




ITPENERGISED
Earth. Smart. Solutions

**ENVIRONMENTAL MANAGEMENT
AND COMPLIANCE**

ENVIRONMENTAL MANAGEMENT AND COMPLIANCE



ENVIRONMENTAL COMPLIANCE

Introduction

ITPEnergised (ITPE) was formed when Energised Environments Limited acquired Bristol-based IT Power Consulting Limited. ITPE is a trusted advisor providing client-focused, commercially minded, energy and environmental consulting services to clients in onshore & offshore energy, transport & infrastructure, property and corporate sectors.

We provide client-focused and commercially-minded environmental and energy consultancy services. Our team members have provided environmental management, audit, and training support to clients in various sectors including:

- Oil and gas
- Finance and legal services
- Printing and publishing
- Brewing and distilling
- Retail
- Commercial
- Industrial
- Automotive
- Renewables
- Manufacturing & fabrication

Our team, has significant expertise gained through working with some of world's leading multi-national companies. We have strong corporate credentials, a first class in-house team, supported by the best technical sub-consultants we know based on our experience, allowing us to adapt our offering to each geography and the specifics of every project, on a case-by-case basis. We work closely with our clients to understand their strategic aims, operational challenges and opportunities

to assist them in implementing bespoke solutions which manage their compliance responsibilities and corporate reputation.

Our capabilities

Our EMS, Energy and H&S Management System, Auditing and Training expertise covers the following areas:

- Systems gap analysis, audit and review
- ISO 14001:2015 amendment review and planning
- Lifecycle analysis and supply chain management
- Environmental aspects / health & safety risk identification and evaluation / energy baseline development
- Management system support (ISO 14001:2004 / ISO 14001:2015, OHSAS 18001, ISO 50001:2011)
- KPI development and tracking
- Environmental, energy, and health & safety legal compliance assessments
- Register development
- Bespoke management systems documentation development, including electronic platforms
- Training and capacity building, including facilitated workshops for staff and senior management
- On-going system support and secondments
- Environmental, energy, and health & safety audit programme development and delivery
- Project risk based audits, including responsible investment related assessments (Equator Principles, CDP, FTSE4Good, World Bank / IFC / EBRD / Green for Growth)
- Delivery of training in: EMS Implementation, EMS Internal Auditing, and Foundation Level Environmental Management.

ITPEnergised ADVICE FOR ENVIRONMENTAL MANAGEMENT COMPLIANCE

If you are looking for a reliable partner to support you in meeting your environmental compliance requirements please contact:

Ruth Fain on ruth.fain@itpennergised.com and +44 (0) 7483 121 722or

Harriet Assem on harriet.assem@itpennergised.com and +44 (0) 7881 385 641

ENVIRONMENTAL COMPLIANCE

Selected project experience

Environmental & Energy Management Systems, ESOS, health & safety compliance

Expro

ITPE is currently working with Expro in the UK to augment its EHS Management Systems. This work has also included the provision of environmental management training, and the provision of legal compliance assessments from an environmental as well as health and safety perspective. An Environmentally Critical Elements assessment has also been delivered to Expro. Additionally, we assisted Expro to achieve compliance with ESOS and are now working towards ISO 50001 certification with this client.

Delivery of 'International Basic EHS Auditing Skills' training

Auditing Roundtable

Members of the ITPE team have previously delivered EHS internal auditor training to staff of Novartis (Switzerland and France) and Cabot (Netherlands) following instruction from the Auditing Roundtable. The two day 'International Basic EHS Auditing Skills' course was delivered to both these organisations.

Environmental management and compliance services

Schlumberger (SLB)

ITPE's team members provide environmental compliance audit services for SLB's North Sea Geo-Region which encompasses the UK, Netherlands, Denmark and Norway. The total site

portfolio covers over 30 sites of varying size and activity covering manufacturing, R&D, well services, drilling and measurement and warehousing.

Our staff also provide legal register services detailing both the environmental and health and safety requirements of the organisation's onshore supply base related activities. Additionally, we provide SLB with environmental due diligence assessments on an on-going basis as required. In 2014 ITPE also delivered a five day training course regarding EMS implementation and auditing in Tunisia.



Management system development, CSR, and audit

Aberdeen Asset Management (AAM)

ITPE's team members previously designed an EMS for AAM's operations in the UK, US, Australia, Sweden, Finland, Germany, and Singapore. In addition to facilities, the EMS was built to ensure cognisance of the client's three main functions– Equities (including Socially Responsible Investment), Fixed Income, and Property). An appreciation of CDP reporting, FTSE 4Good, UNPRI, Equator Principles, and UKSIF were required to deliver this work. Additionally, our team has supported AAM with regard to its CSR reporting. ITPE staff also designed and implemented AAM's 14001:2004 compliant internal audit programme.

ITPEnergised ADVICE FOR ENVIRONMENTAL MANAGEMENT COMPLIANCE

If you are looking for a reliable partner to support you in meeting your environmental compliance requirements please contact:

Ruth Fain on ruth.fain@itpennergised.com and +44 (0) 7483 121 722or

Harriet Assem on harriet.assem@itpennergised.com and +44 (0) 7881 385 641

ENVIRONMENTAL COMPLIANCE

ESOS compliance, environmental legal register development and compliance assessment

Proserv

ITPE assisted Proserv to determine its energy baseline and conducted a number of site assessments to satisfy the requirements of ESOS. Following this programme of work, a Scottish Legal Register was developed and a compliance assessment undertaken of Proserv's Birchmoss facility near Aberdeen UK.



Environmental, health, safety, and social performance reporting

European Bank of Reconstruction and Development (EBRD)

Members of the ITPE team have previously acted as auditors of a proposed combined cycle gas turbine (CCGT) power plant in Romania, a proposed oil and gas field development in Ukraine, and an oil and gas extraction field in Albania. All of these sites were audited against the EBRD Performance Requirements (environment, health, safety and social).

Environmental and social due diligence

Green for Growth Fund (GGF)

ITPE provided support as part of a consortium with regard to the development of reporting templates and reporting of environmental and social aspects of the organisations and projects funded by the Green for Growth Fund. Reporting was based on both the EBRD and GGF Performance Requirements.

Development of ISO 14001 and 50001 Certified Environment and Energy Management System (EEnMS)

Maclay Murray & Spens

ITPE assisted Maclay Murray & Spens to develop and implement an EEnMS for its UK estate. The integrated management system was certified in October 2015 and was used to ensure compliance with ESOS.

EHS compliance audits and energy auditing

Cummins

Members of the ITPE team were involved in directing, managing and delivering audits to Cummins as part of a European wide programme of EHS compliance at all manufacturing sites of this major automotive engineering group. This project required extensive on-site assessment and analyses of compliance with EHS legislation. ITPE has also assisted Cummins to deliver a series of energy audits in compliance with the CRC regulations.

ITPEnergised ADVICE FOR ENVIRONMENTAL MANAGEMENT COMPLIANCE

If you are looking for a reliable partner to support you in meeting your environmental compliance requirements please contact:

Ruth Fain on ruth.fain@itpennergised.com and +44 (0) 7483 121 722or

Harriet Assem on harriet.assem@itpennergised.com and +44 (0) 7881 385 641